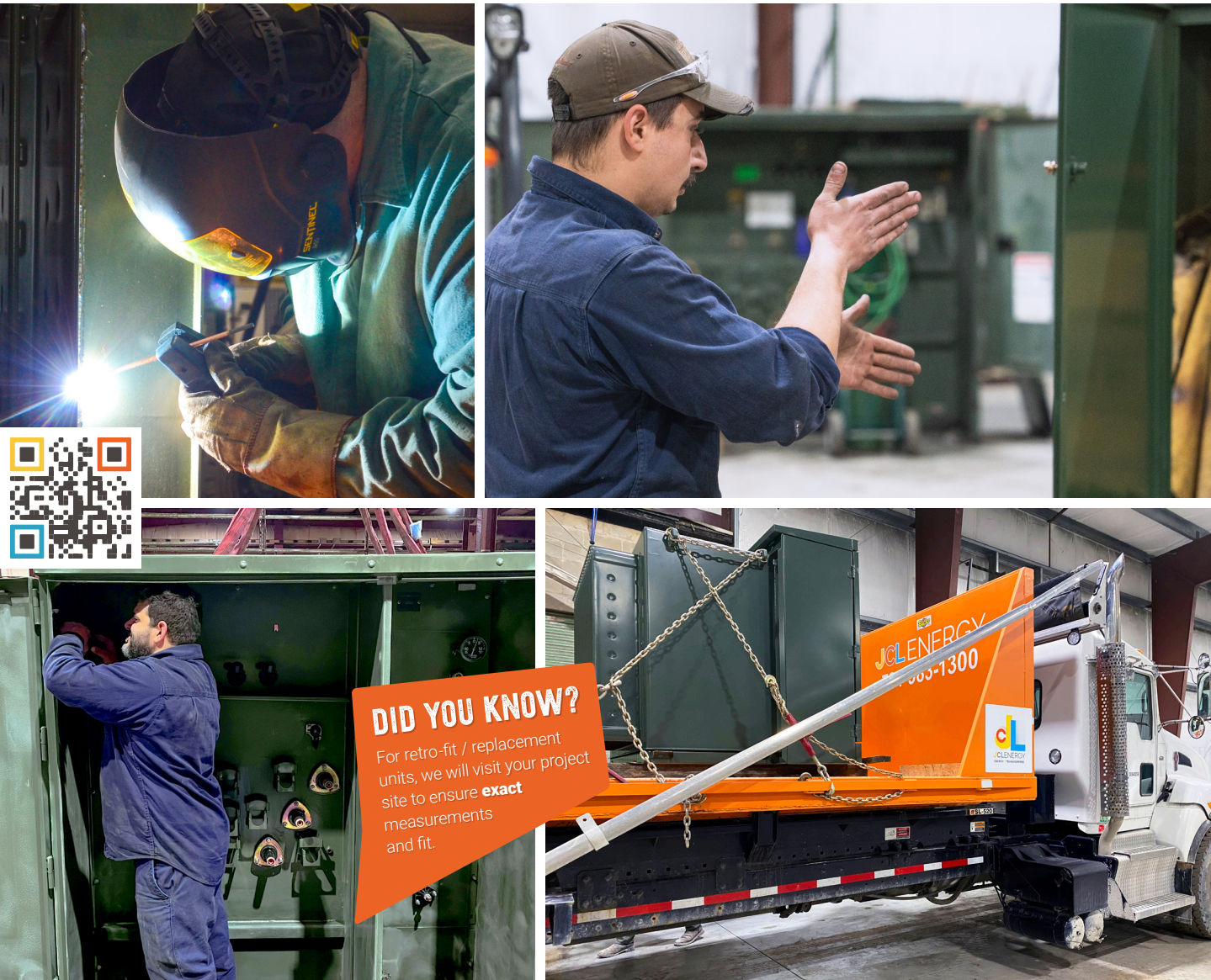


JCL ENERGY | WE ARE ⚡ SERVICE/REPAIR

Your First Responders for Electrical Needs and Live-Time Problem Solving!

With JCL Energy's "boots on the ground" mentality, our tight-knit group of highly trained professionals offer **fast, friendly** and **reliable** service.



DID YOU KNOW?

For retro-fit / replacement units, we will visit your project site to ensure **exact** measurements and fit.

Our Services Include

- Component Replacements
 - Bushings, Gauges, Valves
- Megger / TTR / Resistance Testing
- Oil Sampling / Analysis
 - DGA, Moisture, PCB, Oil Screen
- Rewinds / Pulling Turns
- Remote Sample Device Installations
- Oil Processing
- Fluid Top Off
- Internal Inspections
- Field Dress / Test
- Component / Gasket Leak Repairs
 - Bushings, Gauges, Valves
 - Radiators
 - Small Weld Leaks

Our Technicians will inspect, test and repair your transformer to ensure it returns to you at ANSI Standard!

Emergency Response

- Ready to Ship Units in Stock
- Immediate Delivery
- 24/7 – 365 Day Responsive Service
- Unit Replacement for:
 - Disaster Relief
 - Temporary Power
 - Explosion and Fire Damage